

ADSL/xDSL – Anschlusskabel

Produktinformationen

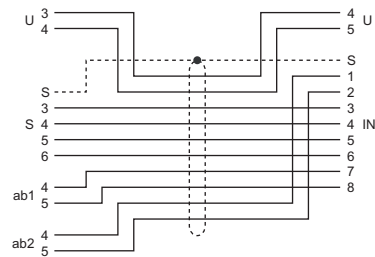
Produktbeschreibung

- ITplus®-Anschlusskabel zur universellen ADSL-Installation
- Anschlusskabel für ADSL-Splitter und NT2ab inkl. U-, S-, ADSL-, ab1- und ab2-Schnittstelle
- Kabelschemata: 1, 2, 3

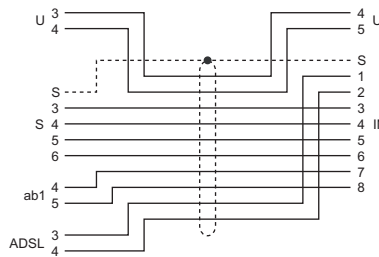
Gemeinsame Merkmale

- Kabel schwarz

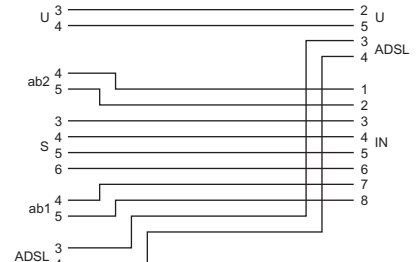
Schemata



Schema 1

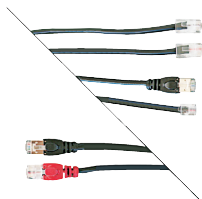


Schema 2

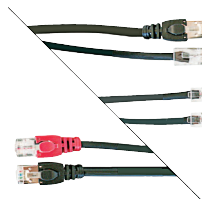


Schema 3

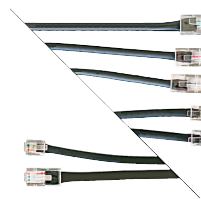
Produktabbildungen (Beispiele)



ADSL-Kabel
(U/S/ab1/ab2)



ADSL-Kabel
(U/S/ADSL/ab1)



ADSL-Kabel
(U/S/ADSL/ab1/ab2)

Bestelltabelle

Schema	Steckverbinder [Stk]		Länge [m]	Artikel-Nr.	E-No.
	RJ45	RJ11			
1	5	1	0.5	ALU-22 005-60	977 802 158
			1.0	ALU-22 015-60	977 802 258
2	4	2	0.5	ALU-21 005-60	977 801 158
			1.0	ALU-21 015-60	977 801 258
3	4	3	0.5	ALU-23 005-60	101 322 008
			1.0	ALU-23 015-60	101 322 018