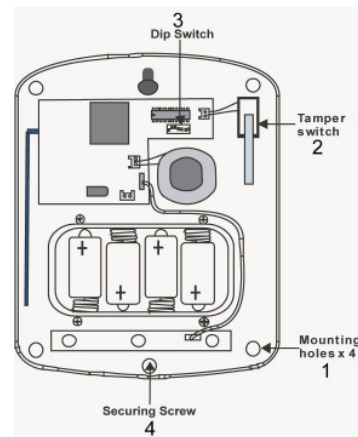


Wireless Outdoor Bell Box (EAS/SIR8/A)

- 1 **Mounting Holes x 4**
- 2 **Tamper Switch**
- 3 **Function Dip Switch Set**
Contains 7 jumpers to enable the learning mode and to set the alarm period of siren and strobe light.
- 4 **Securing Screw**
To secure the case from opening



Accessories included

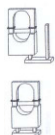
In addition to the EAS/SIR8/A itself, the following accessories are also included in the package:

- a. 4 x large wall plugs.
- b. 4 x 4mm x 30mm cross head fixing screws.
- c. 4 x 1.5V D alkaline cells.

Dip Switch Table

Remove the cover by unscrewing the single screw located at the bottom. In the middle of the "L-shaped" PCB board, you can see a dip switch set which consists of 7 dip switches. The function of each dip switch is listed as table below.

The dip switches are either On or Off.



SW1		Siren Learning
OFF		Normal operation
ON		Learn-in mode
SW2		Strobe Activation
OFF		On for alarm period
ON		On until reset
SW3		Siren Duration
OF	OFF	
ON	OFF	5 min.
OFF	ON	10 min.
ON	ON	1 second (test)
SW5		
Reserved		
ON		
SW6		Memory Reset
OFF		Normal
ON		Clear Memory
SW7		
Reserved		
ON		

Power Supply

EAS/SIR8/A is powered by 4 D-cell Alkaline batteries with life expectancy of over 3 years.

The EAS/SIR8/A can detect if the battery is low. Low battery detection operates at a threshold of 4V +/- 10% where the EAS/SIR8/A has enough power to typically operate for 1 month before complete exhaustion. The siren low battery signal will be enunciated by five beeps when arming / disarming.

BX-8 Function Overview

● Siren Memory Clear

The siren resets and clears all memory contents by a removal of the batteries. Wait for 1 minute and slide dip switch 6 to ON position before re-inserting the batteries. The siren will produce a short confirmation tone. If dip switch 6 is turned OFF, then siren ID code learned will reset every time when the siren has a power-up sequence.

● Siren Audible Performance

The siren produces a minimum of 104 dBA sound pressure at 1 meter on axis. It is programmable via two jumpers (SW3 and SW4) for four different siren durations:

- 1) 3 min.
- 2) 5 min.
- 3) 10 min.
- 4) 1 second (test)

- The fourth position (1 second) is used for testing during installation.

- The siren is silenced when either the programmed siren duration expires or the Control panel turns off the siren.

- In case of low battery condition, BX-8 gives an intermittent alarm sound instead of continuous alarm sound during the programmed siren duration.

● Strobe Light

The strobe light will flash to indicate various system status and can be programmed by SW2 as shown in switch position table. It will be turned off either when the programmed siren duration has expired or the panel resets the system.

● Tamper Alarm

If the siren detects a tamper condition it will activate the siren for the programmed alarm period. If the tamper condition persists, the siren will sound a series of five pips either every time the system is armed or when the tamper is enabled, to indicate a fault. Tamper feature can be enabled/disabled from the control unit by selecting "Device +/-" menu, then "Program Siren" menu, and then, choose "Siren Tamp ON" or "Siren Tamp OFF" and press OK.

● **Confirm Programming**

The siren can be programmed to produce additional confirmation beeps to tell you when the systems is armed and disarmed from outside the premises. One beep for armed or home armed, two beeps for disarmed.

The setting up procedure can be done from the control panel under “**Device +/-**” menu then “**Program Siren**” menu and select “**Confirm On**” or “**Confirm Off**”

- Disable the Siren Confirmation by selecting “**Confirmation Off**” and press “**OK**”.
- Enable the Siren Confirmation by selecting “**Confirmation On**” and press “**OK**”.

● **Previous Alarm Warning**

If there has been an alarm while you were away, the EAS/SIR8/A will sound and flash for 3 seconds when the system has been disarmed.

WARNING: If the siren is activated for 3 seconds when you disarmed your system, this suggests that there could be an intruder still in your premises.

● **Audio & Visual Status Indication**

In order to easily recognize various statuses, the BX-8 uses the following methods while you are in the Arm, Home and Disarm of the system to indicate the user:

	Siren Audio	Strobe light indication
Arm/Home	1 beep *	3 LED flashes at once
Disarm	2 beep *	Sequentially flashes for 1 cycle
Arm (Low Battery)	5 beeps	3 LED flashes for three times
Disarm (Low Battery)	5 beeps	Sequentially flashes for 2 cycles
Arm (Tamper)	5 beeps	3 LED flashes for three times
Disarm (Tamper)	2 beeps *	3 LED flashes for three times

<NOTE>

☞ For the one with * mark, this means the Siren Audio indication will be affected by the Confirmation ON / OFF. When setting Confirmation to OFF, the confirmation sound will not be available.

Getting Started

To insert the batteries:

- Step 1. Release the screws at the bottom of BX-8 and lift the outer case carefully.
- Step 2. The battery compartment is a large box in the BX-8 with a lid secured with 4 screws.
- Step 3. Remove the four screws and take off the compartment lid.
- Step 4. Insert the D cell alkaline batteries into the battery compartment by making sure they are right way around.
- Step 5. The BX-8 will give beeps and flashes when the last battery is inserted.
- Step 6. Replace the battery compartment lid with the four screws taking care not to over tighten

Programming BX-8

Note: Remember to learn in at least one other device into control panel before BX-8 can be added

- Step 1. Turn **ON** SW1. The siren will beep and flash. The siren is now in learn mode.
- Step 2. Program the Control Unit by selecting “**Device +/- menu**”, then “**Program Siren**” menu, and then “**Learn Siren**”.
- Step 3. Press “**OK**”, and the Control unit will give a long beep to confirm followed by the siren’s response of a beep and a flash.
- Step 4. Slide SW1 to the **OFF** position, the siren will beep and flash to confirm that the siren is now in normal operation mode.
- Step 5. Disable the tamper switch by selecting “**Program Siren**” menu on the control unit, then “**Siren Tamp OFF**” and press “**OK**”.
- Step 6. Select “**Confirm ON**” or “**Confirm OFF**” under the “**Program Siren**” menu on the control unit, and press “**OK**”. The siren will beep to confirm.
- Step 7. Set SW 3 & 4 for your desired alarm period.
- Step 8. Select “**Entry Snd ON**” or “**Entry Snd OFF**” and press **OK**

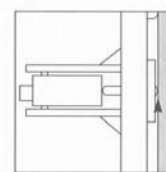
<NOTE>

☞ Once the tamper protection is disabled, the siren will automatically revert to ON after about an hour. That is if it has not yet been switched back on again manually by selecting “**Siren Tamp ON**”.

Installing BX-8

The tamper switch plunger protrudes through the back of the unit, so that if the siren is pulled off from the wall, the alarm will be activated. Ensure that it is fully depressed when the siren is mounted. If there is a gap, pack with a suitable spacing material.

- Step 1. Find the location where BX-8 is to be mounted.
- Step 2. Using the large screws and wall plugs provided, mount on wall through the 4 x mounting holes.
- Step 3. Fix the siren cover with the securing screw.
- Step 4. Enable tamper switch by selecting the “**Device +/-**” menu, then, “**Program Siren**” menu on the Control Unit.
- Step 5. Test by arming and disarming with the Control Unit. If there are 5 short beeps while arming then, the tamper is not correctly set. The installation is now complete.



Tamper switch plunger must be pressed in fully by wall surface